

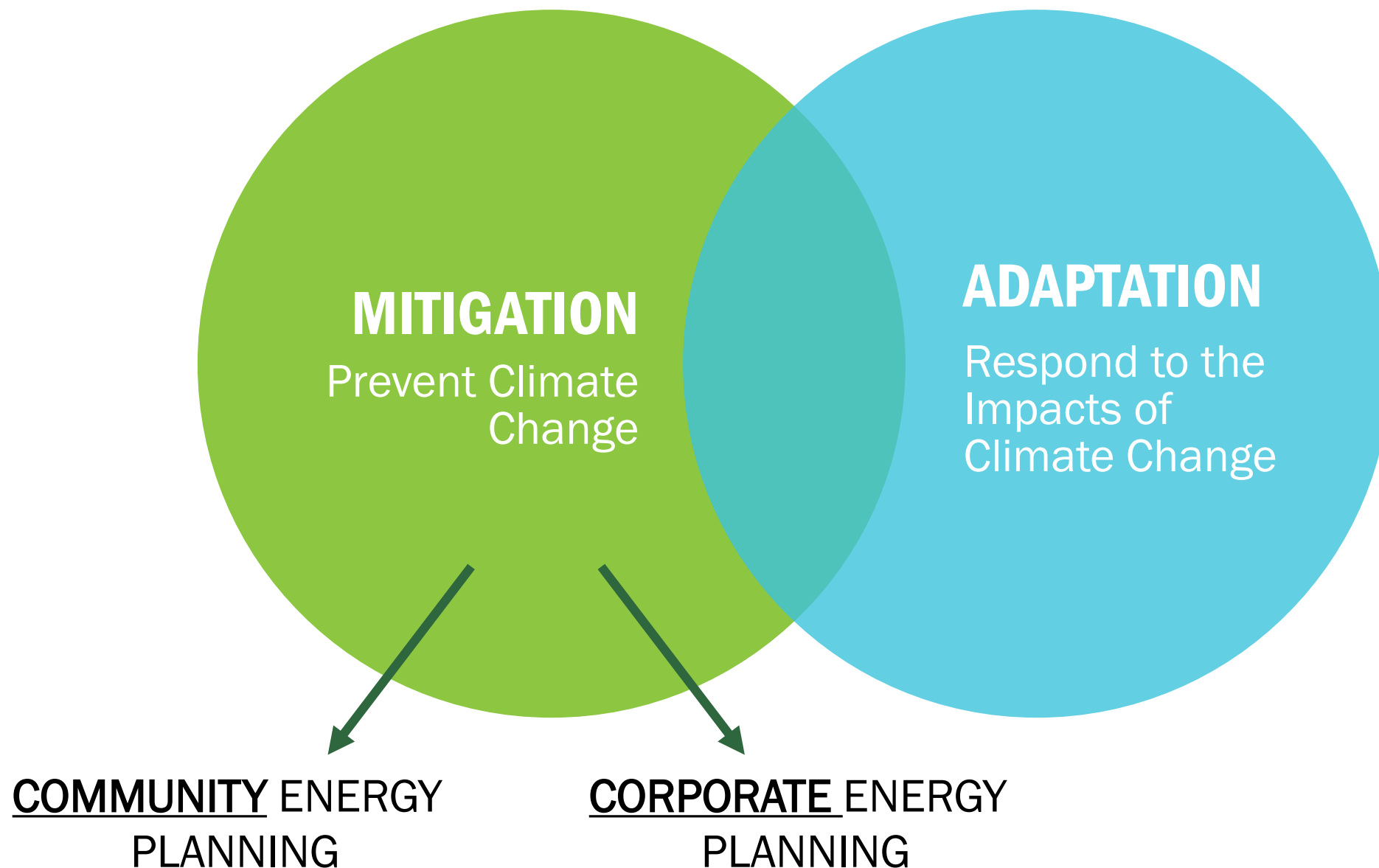


# Windsor-Essex Climate Change Collaborative

Claire Sanders, Climate Change Specialist  
Summer Locknick, Research Assistant  
Essex Region Conservation Authority



It's real. It's us. Experts agree.



# Community Energy Planning

Helps define community priorities around energy with a view to improve efficiency, reduce greenhouse gas emissions, enhance resiliency, and drive economic development.

## Deliverables:

- 1) Baseline emissions inventory and energy mapping
- 2) Setting targets for energy and emissions reductions
- 3) Action plan to reach targets
- 4) Public consultation
- 5) Final implementation plan





## Community Energy Plan

May 2016



## Windsor's Community Energy Plan A Powerful Plan for the Future



Garforth International Inc  
Energy Productivity Solutions

ICLEI  
Local Governments  
for Sustainability

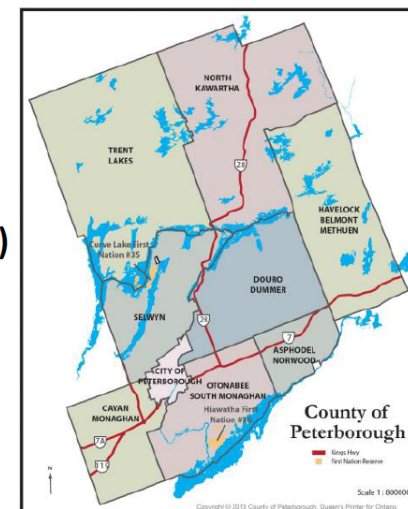
City of Windsor  
June 8, 2017



## SUSTAINABLE PETERBOROUGH

The Greater Peterborough Area (GPA) consists of:

- City of Peterborough
- County of Peterborough
- 8 member Townships
- Curve Lake First Nation
- Hiawatha First Nation



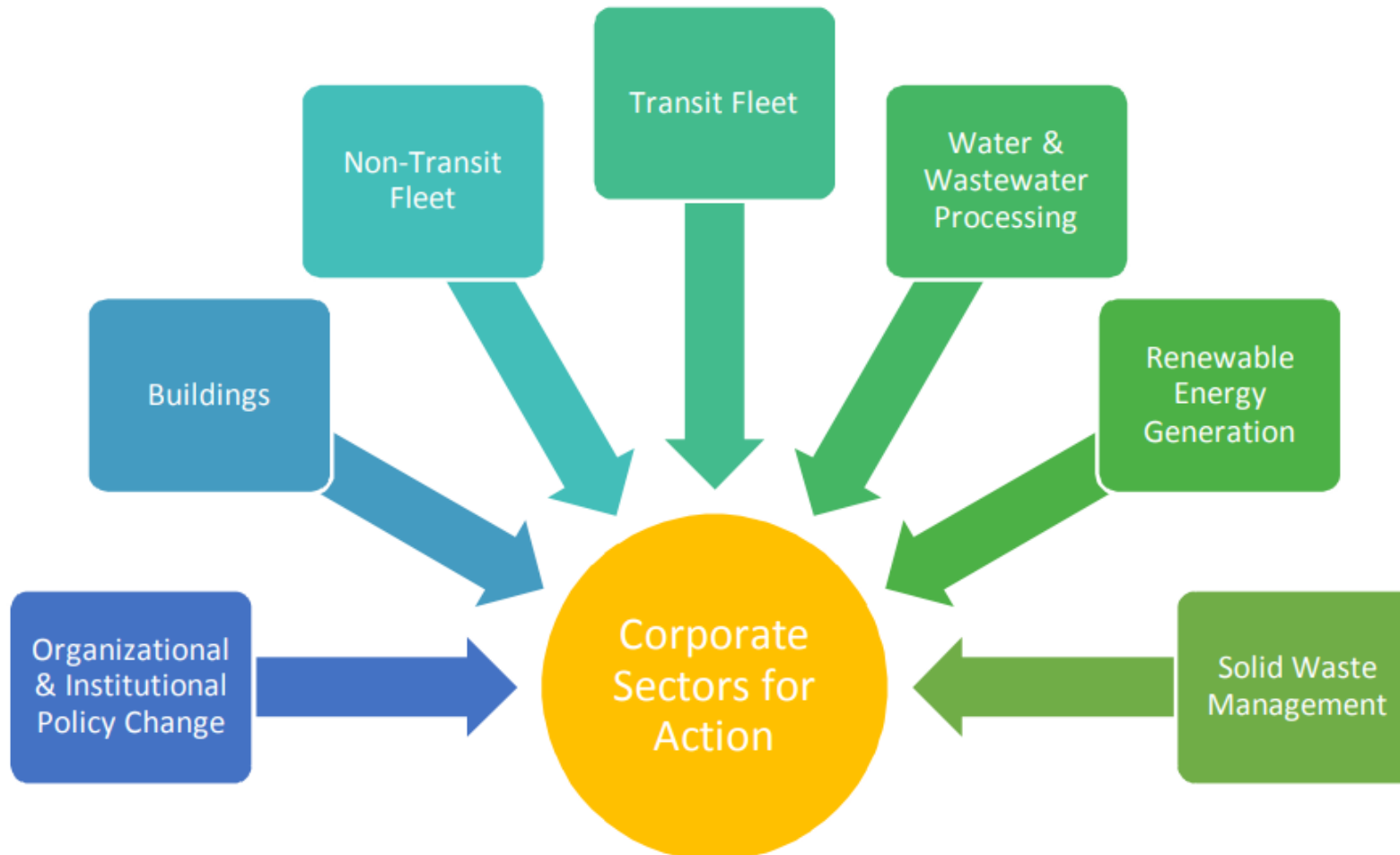
In 2010, the GPA received funding for the development of a Community Sustainability Plan. All 12 partners adopted the plan in 2012.

## CLIMATE CHANGE ACTION PLAN



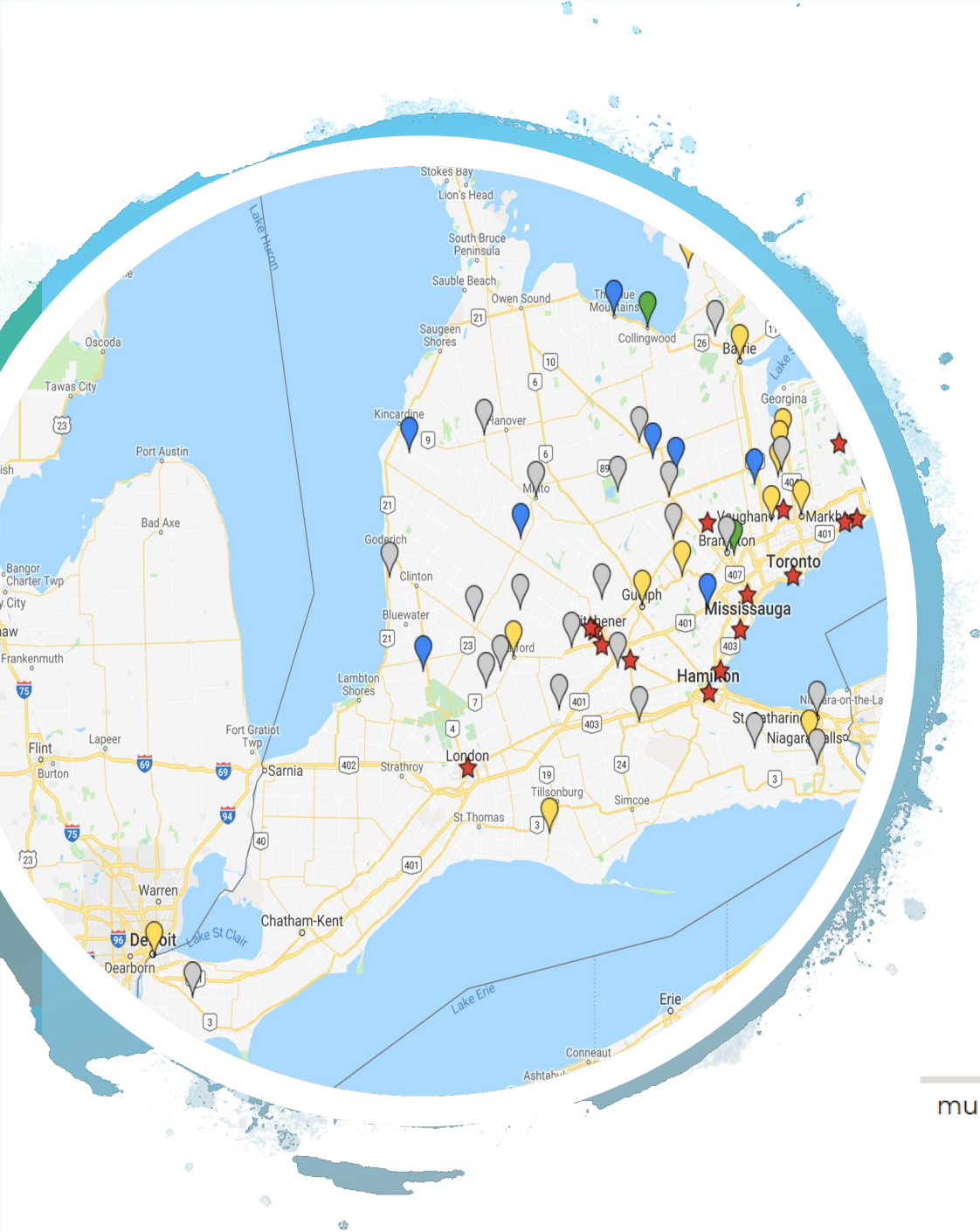
# Corporate Energy Planning

A Corporate Climate Action Plan (CCAP) is a corporate-wide plan to reduce energy and emissions from municipal operations and fleets.



# Partners for Climate Protection





# Why Join Partners for Climate Protection?

1. Free
2. Access to online tools that can help with mandatory reporting
3. Guidance from regional advisor
4. Unlock FCM funding

**350+**

municipalities participating

**180+**

local climate change action  
plans prepared

**5**

Regional Climate Advisor  
teams available to support  
you