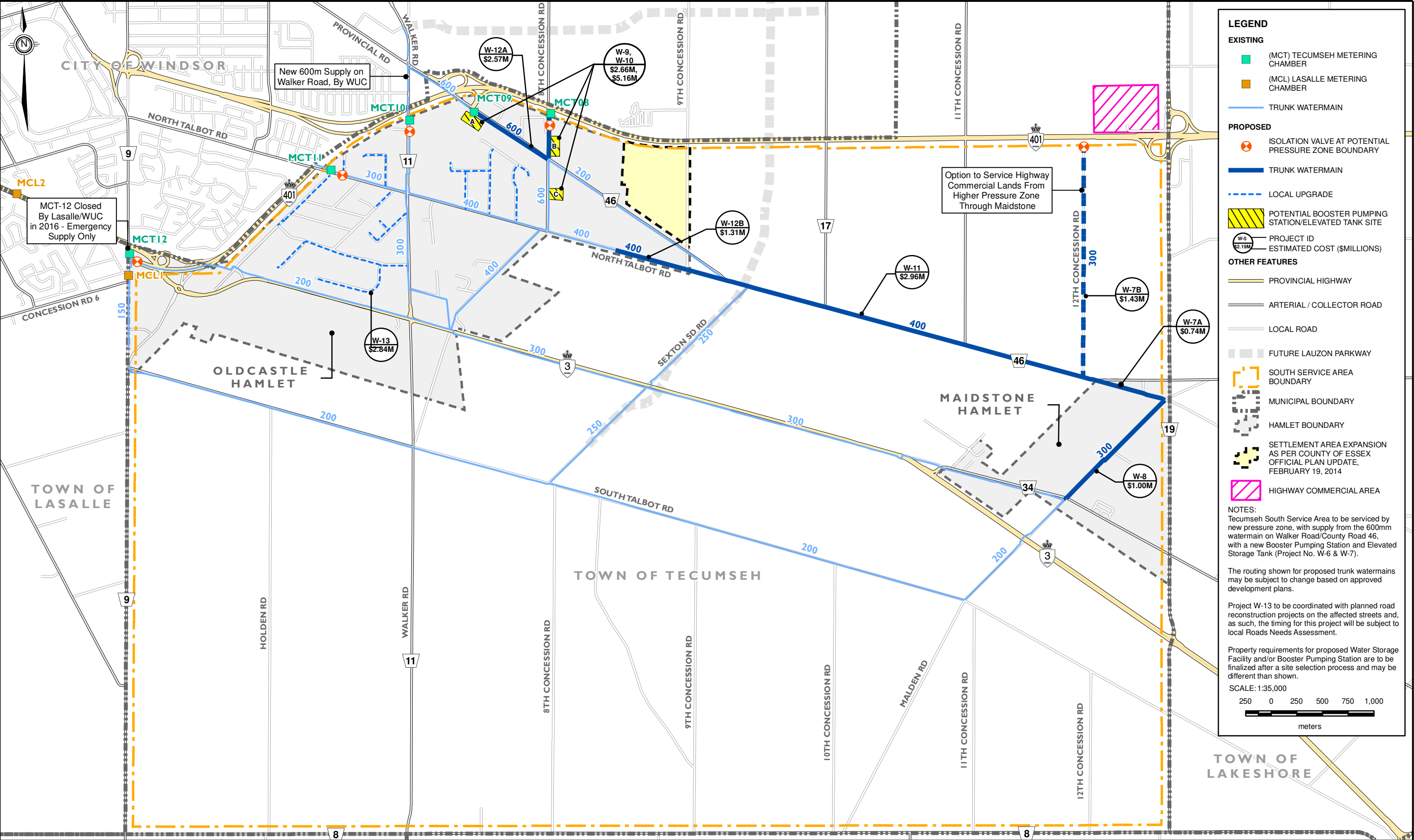


## Updated Water System Servicing Strategy

Project Name	Project ID	Location	Class EA Schedule	Cost (\$Million)
West Tecumseh Trunk Watermain CR 22 to CP Railway	W-1	Tecumseh Hamlet	B <sup>1</sup>	\$2.04
East Tecumseh Hamlet Watermain Connection	W-2A	Tecumseh Hamlet	B <sup>1</sup>	\$0.46
Trunk Watermain on Manning Road CR 22 to CP Railway	W-2B	Tecumseh Hamlet	A <sup>+</sup>	\$1.88
West Tecumseh Trunk Watermain CP Railway to CR 42	W-4	Tecumseh Hamlet	B <sup>1</sup>	\$2.26
Trunk Watermain on Manning Road CP Railway to CR 42	W-5A	Tecumseh Hamlet	A <sup>+</sup>	\$0.61
Trunk Watermain on CR 42 11 <sup>th</sup> Concession Road to Manning Road	W-5B	Tecumseh Hamlet	A <sup>+</sup>	\$0.92
South Tecumseh Trunk Watermain CR 42 to Hwy 401	W-6	Tecumseh Hamlet	A <sup>+</sup>	\$1.72
North Talbot Road Trunk Watermain Walker Road to 8 <sup>th</sup> Concession Road	W-3	Oldcastle Hamlet (Completed)	-	\$0
South Tecumseh Trunk Watermain 12 <sup>th</sup> Concession Road to Malden Road	W-7A	Southeast Tecumseh	A <sup>+</sup>	\$0.74
South Tecumseh Trunk Watermain CR 46 to Hwy 401	W-7B	Southeast Tecumseh	A <sup>+</sup>	\$1.43
Maidstone Hamlet Trunk Watermain	W-8	Maidstone Hamlet	A <sup>+</sup>	\$1.00
Zone 2 Booster Pumping Station	W-9	Oldcastle Hamlet	B	\$2.66
Zone 2 Water Storage Facility	W-10	Oldcastle Hamlet	B	\$5.16
County Road 46 Trunk Watermain Sexton Road to Maidstone Hamlet	W-11	Southeast Tecumseh	A <sup>+</sup>	\$2.96
Southwest Tecumseh Trunk Watermain	W-12A	Oldcastle Hamlet	A <sup>+</sup>	\$2.57
North Talbot Road Trunk Watermain	W-12B	Oldcastle Hamlet	A <sup>+</sup>	\$1.31
Oldcastle Hamlet Watermain Upgrades	W-13	Oldcastle Hamlet	A <sup>+</sup>	\$2.84
<b>Total Estimated Capital Cost</b>				<b>\$20.67</b>

<sup>1</sup> Project may be approved Schedule A if implemented under a Planning Act Approval in accordance with Section A.2.9 of the Class EA Planning Process





CLIENT

TOWN OF TECUMSEH

PROJECT NAME:

WATER AND WASTEWATER MASTER PLAN UPDATE  
PREFERRED WATER SERVICE STRATEGY  
SOUTH SERVICE AREA

DRAWING No:

FIG 6.2