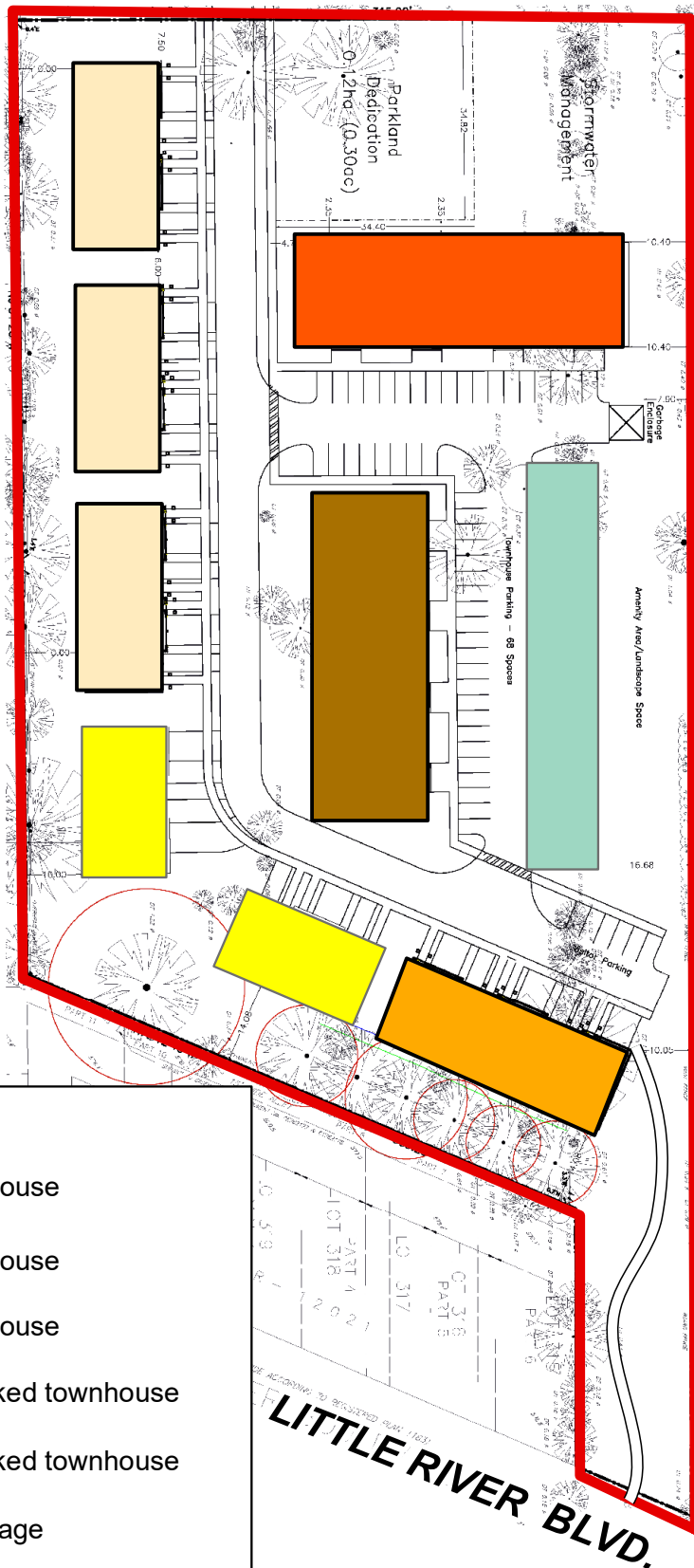








DILLON DR.



Building Type

-  3-unit townhouse
-  4-unit townhouse
-  5-unit townhouse
-  16-unit stacked townhouse
-  24-unit stacked townhouse
-  Parking Garage



Prepared By:
Tecumseh Planning and
Building Services Department



Legend:

-  Subject Property

Attachment 5A
Official Plan and Zoning By-law Amendments
Briday Victoria Development Corporation
12433 Dillon Drive (Former Victoria Public School)
Revised Site Plan