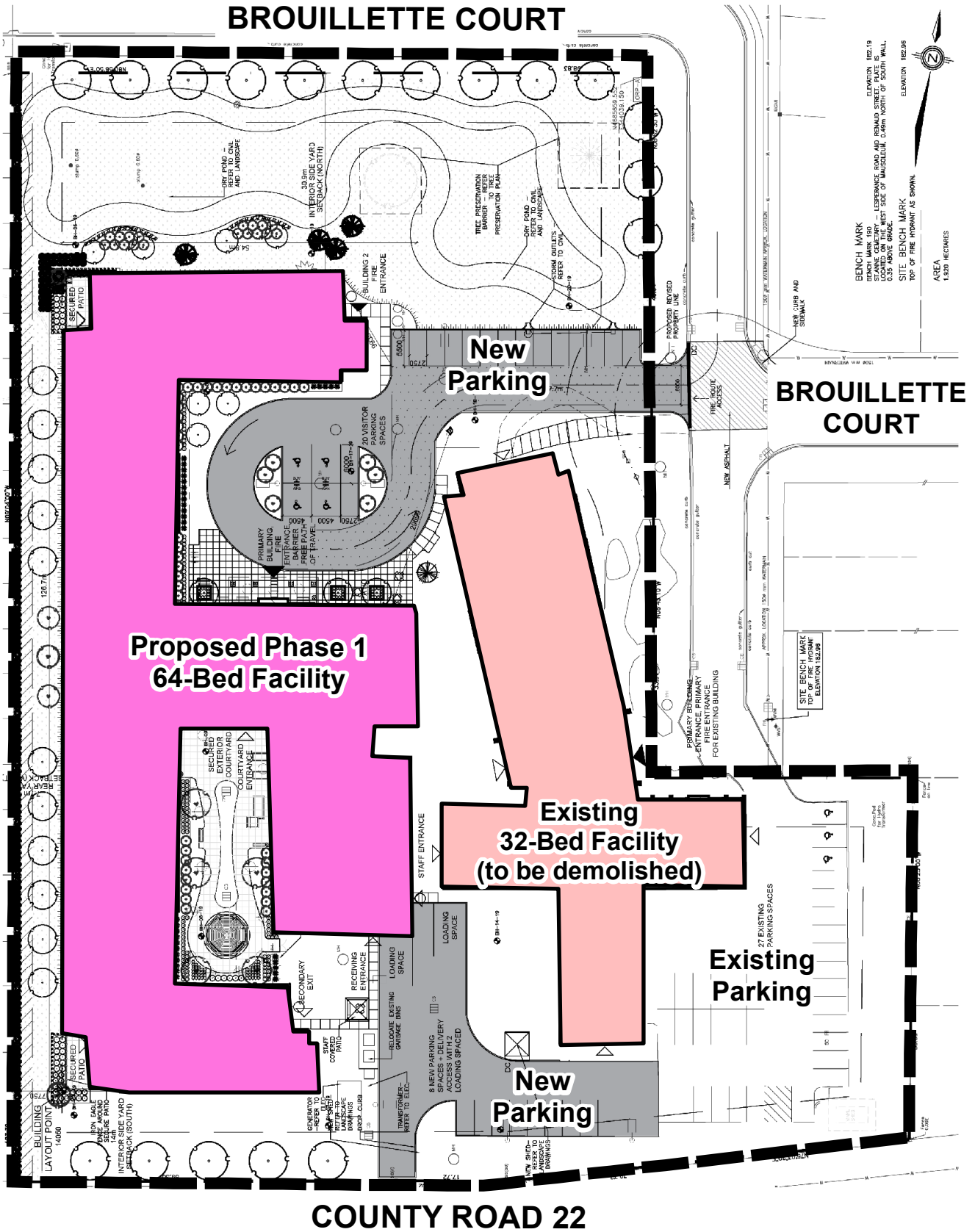


# BROUILLETTE COURT



# COUNTY ROAD 22



**Prepared By:**  
**Tecumseh Planning and**  
**Building Services Department**

Attachment 2A

## Site Plan Control

1230839 Ontario Limited/Brouillette Manor

11900 Brouillette Court

### Phase 1 Proposed Site Plan, Detail View