

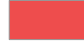

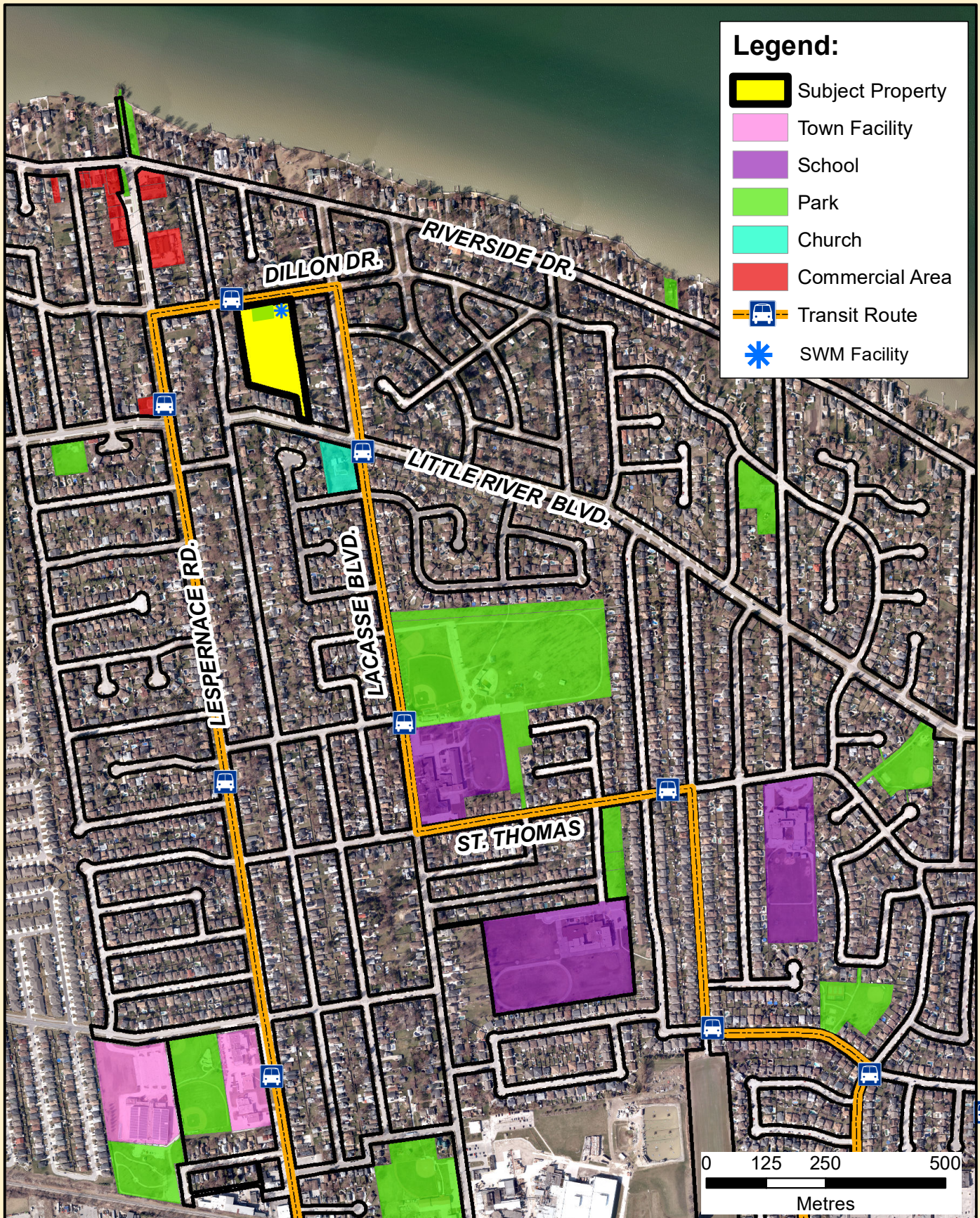


Legend:

-  Subject Property
-  Town Facility
-  School
-  Park
-  Church
-  Commercial Area
-  Transit Route
-  SWM Facility



Prepared By:
Tecumseh Planning and
Building Services Department



Attachment 8

Official Plan and Zoning By-law Amendments
Briday Victoria Development Corporation
12433 Dillon Drive (Former Victoria Public School)
Surrounding Community Facilities