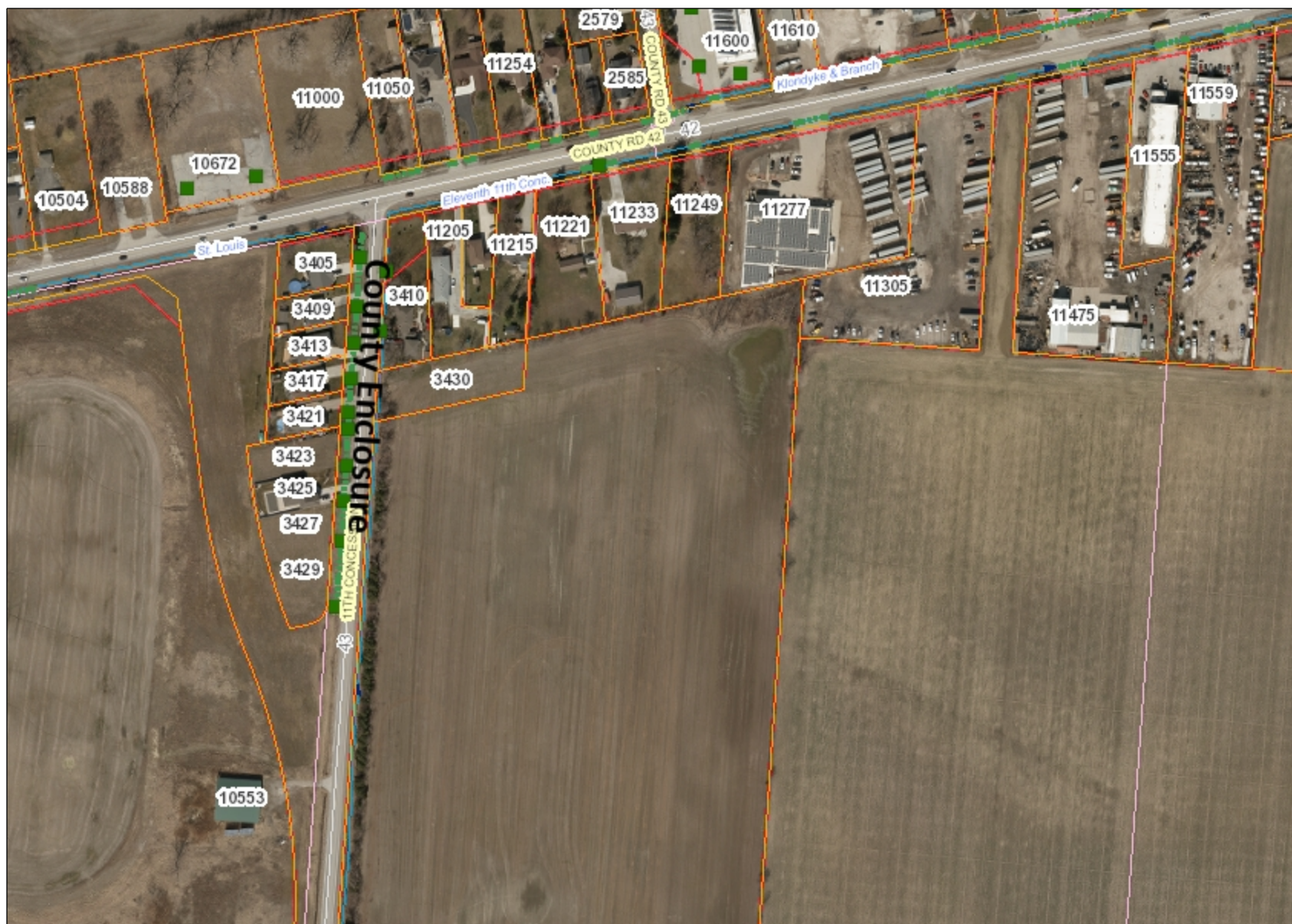




Town of Tecumseh Mapping



Legend

Storm Manhole

- MH Location
- Removed

Catch Basin

- Active
- Proposed
- Removed

Storm Sewer

- <all other values>
- Active Storm
- Abandoned Storm
- Removed Storm

Address

- Tecumseh Assessment (In-House Vadim Data as of Sept. 6, 2021/ MPAC Data August 16, 2021)
- MPAC Assessment Sept Q3 2021
- Tecumseh Ownership Sept Q3 2021
- Lake
- Rail Road
- Tecumseh Street Centreline
- Essex County Streets
- Parks
- Municipal Drain

Notes

Enter Map Description

THIS MAP IS NOT TO BE USED FOR NAVIGATION
Copyright the Town of Tecumseh, 2016. Data herein is provided by the Town of Tecumseh on an 'as is' basis. Assessment parcel provided by Teranet Enterprises Inc. Data layers that appear on this map may or may not be accurate, current, or otherwise reliable.

0 57.66 115.3 Meters

1: 3,459



11/26/2021