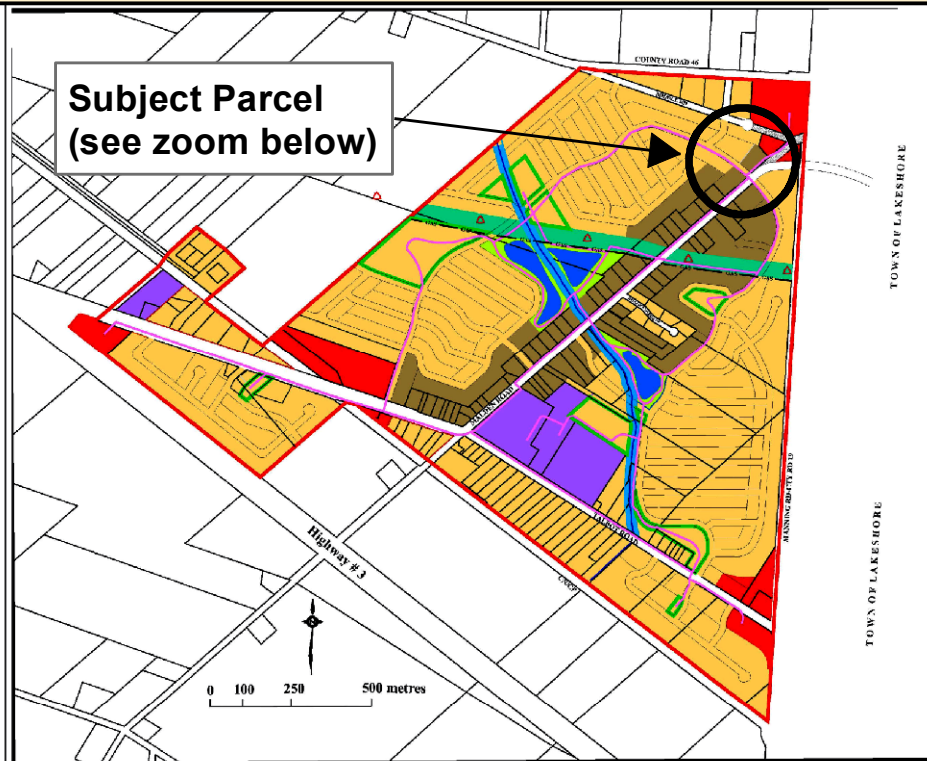


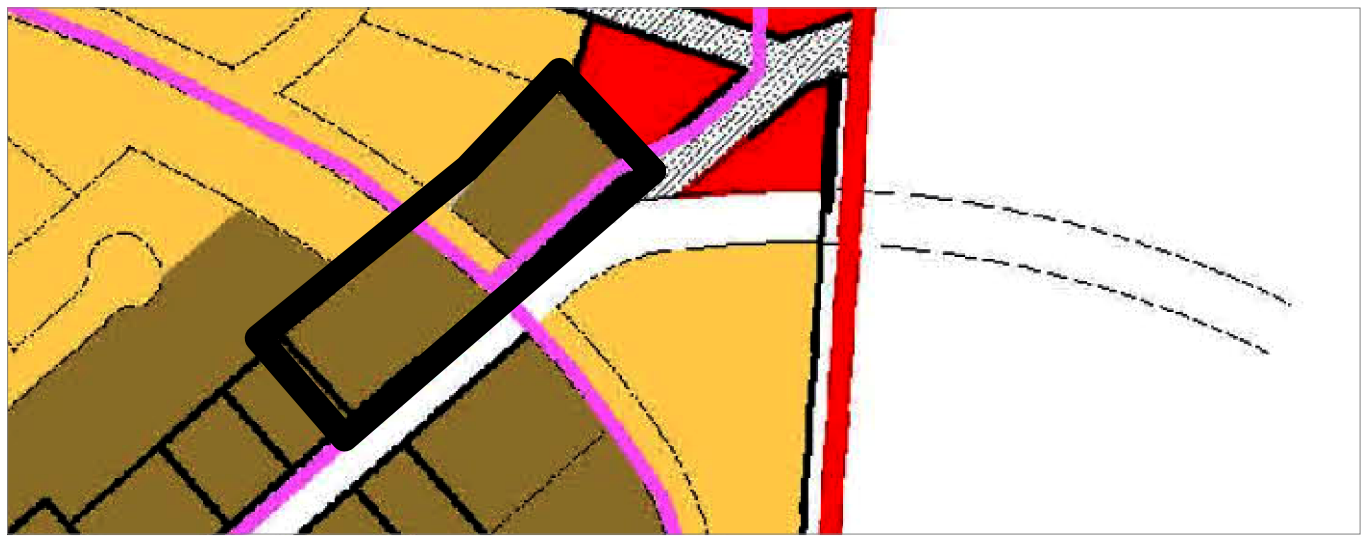
**Subject Parcel  
(see zoom below)**



<b>Legend</b>				
Settlement Area Boundary	Community Facility	Hydro Towers	Multipurpose Trail	Conceptual Road Pattern
Maidstone Hamlet Residential	Recreational	Conceptual Road Closure	-GAS- Gas Line	
Maidstone Hamlet Residential 30.48 metre Frontage Lots	100' Pike Creek Corridor & Floodway			
General Commercial	Stormwater Management Areas			
	Hydro Right-of-Way			

**SCHEDULE "B-3"**  
Town of Tecumseh Official Plan  
**Maidstone Hamlet  
Settlement Area  
Land Use Plan**

Prepared By:  
Tecumseh Planning and  
Building Services Department



Prepared By:  
Development Services



Subject Parcel

**Attachment 3, DS-2025-01**  
Official Plan and Zoning By-law Amendments  
5881 Malden Road  
**Official Plan**