



The Place for Life

The **Essex Region Conservation Authority** was established in 1973 to protect, restore and manage the natural resources of the Windsor-Essex region. In keeping with the *Conservation Authorities Act*, ERCA works in partnership with residents, municipalities, the Province of Ontario, Government of Canada, and other agencies to increase natural area coverage through tree planting and habitat restoration, improve water quality across our watersheds and our Great Lakes, protect people and property from flooding and erosion, and further our understanding of the environment through science and education. Our goal is a sustainable future which improves our local environment, helps create a community we can all be proud of, and a more vibrant economy that makes this region **The Place for Life**.

Sustaining the Place for Life

The Essex Region Conservation Authority is one of 36 Conservation Authorities across Ontario. The role of Conservation Authorities and their relationship to various partners, including member municipalities and the provincial government derives primarily from their enabling legislation, the *Conservation Authorities Act*, which provides a broad mandate that allows Conservation Authorities to set priorities in collaboration with member municipalities.

ERCA's programs demonstrate an ongoing and consistent response to real and serious problems and challenges in the region - land degradation, natural area coverage, and flooding and erosion - the same challenges we faced upon establishment. Today, new issues such as water quality and the Great Lakes, climate adaptation, and sustainable communities must be considered in meeting the needs of municipalities.

Building from our successes, ERCA's focus continues to be in finding new ways to leverage resources which more effectively address provincial and watershed priorities. Given our daily reliance on our natural resources, the projects, programs and priorities implemented by ERCA are critically important to ensuring the Windsor/Essex/Pelee Island region will continue to be the **Place for Life**.



2019 WATERSHED ACTIONS

ERCA consistently demonstrates a strong business case to member municipalities, and is unique from other organizations and agencies in our ability to leverage funds and partnerships. The following are some project highlights for 2019.

[actions] refer to actions listed in 2016-2025 Strategic Plan

WATERSHED MANAGEMENT SERVICES

- **Climate Change [1.1].** ERCA's Climate Change Specialist will research regional vulnerabilities, impacts and best practices; and lead the development of a Regional Climate Change Plan to identify impacts and vulnerabilities, implementation priorities, and potential funding supports.
- **Hazard Mapping and Forecasting [2.1/11.3/12.3].** Update regional Flood Contingency Plan; explore development of a shared climate station network with partners to assist in providing flood response, and reporting; update Little River Hazard Mapping with the City of Windsor, and provide technical support to all municipalities on flood control/flood infrastructure, master drainage and stormwater studies.
- **Place for Life Policies [11.2].** Continue to consult on and finalize its Place for Life Policies which integrate ERCA's planning, development, and program policies.
- **Client Services [12.3].** Initiate web-based permit application on essexregionconservation.ca to facilitate development review.
- **Planning/Technical Studies [11.2, 11.3].** Work with Lakeshore and Tecumseh to undertake a Lake St. Clair Shoreline Management Plan and Kingsville to finalize a Natural Heritage Background Study as part of the Town's Official Plan updates;
- **Watershed Planning [10.2].** Finalize a Municipal Agreement acknowledging ERCA's role in integrated watershed planning, and protecting and managing natural hazards, natural heritage and water resources; and provide advice and direction to municipalities on over 750 Planning Act applications.

- **Development Review [12.1].** Review over 1,000 Section 28 permit applications for stormwater management; commercial, residential and large-scale industrial/greenhouse development; over 150 Municipal Drainage Act reviews, and respond to 1,300 general water resource related requests.
- **Water and Erosion Control [11.3].** Apply for and manage Water and Erosion Control Infrastructure (WECI) funding for projects in the City of Windsor, Lakeshore, and JRPH Shoreline Design.

CONSERVATION SERVICES

- **Conservation Area Operations [9.2].** Manage 19 Conservation Areas, and over 80km of Greenways including grading, hazard tree removals, site maintenance, enforcement to support visitor use.
- **Tangible Capital Asset Report/Capital Plan [13.1].** Update ERCA's Tangible Capital Asset Inventory and multi-year Capital Plan based on replacement schedules, asset needs, and program needs as part of the next 5-Year Sustainability Plan.
- **Management Planning [9.2].** Complete Cedar Creek Conservation Area Management Plan with the new Conservation Services Advisory Board.
- **Business Plans [8.1].** Develop Business Plans for John R. Park Homestead and Holiday Beach Conservation Areas to identify and confirm infrastructure needs and investments in visitor services where there is a business case to support that investment.
- **Land Acquisition [7.3].** Restore Clean Water~Green Spaces acquisition funding to support securement of key lands with partnership funding in keeping with the Land Securement Strategy.
- **Restoration and Stewardship [6.1].** Restore more than 60 acres of forest and prairie habitat to improve connections, build ecosystem resilience, and benefit water quality, climate change and quality of life.
- **Innovation [5.1].** Monitor phosphorous levels getting into Lake Erie at the innovative 10 acre University of Windsor Alumni Association Wetland at Hillman Marsh Conservation Area with University of Windsor.



- **Source Water Protection [4.3].** Begin updating the Essex Region Source Protection Plan and Assessment Report based on the Section 36 Workplan, and continue to implement Risk Management Services on behalf of municipalities.
- **Watershed Science [5.1/5.2].** Support for research, monitoring, and partnerships; and managing and maintaining data information systems which is critical for evidence-based decision making.
- **Lake Erie Action Plan [4.1].** ERCA is an effective delivery agent in the Lake Erie Action Plan for reducing phosphorus. The 2019 budget includes federal funding to support agricultural BMPs and associated monitoring and science.
- **Detroit River [5.2/14.2].** Build on efforts to de-list the Detroit River as a designated environmental Area of Concern, rehabilitate a 70 acre wetland on the Canard River; and create new fish habitat on the City of Windsor's Pêche Island.

COMMUNITY OUTREACH SERVICES

- **Communications [14.2].** ERCA will continue to utilize essexregionconservation.ca as a platform to improve customer service, usability and accessibility compliance, and efficiency through web-based tools.
- **Education [8.3].** Provide curriculum-based outdoor education for more than 10,000 elementary and secondary school students, including delivery of the Environmental Special High Skills Major Certifications, and deliver new curriculum programming with our Indigenous partners.
- **Program Integration [14.2].** Continue to integrate communications, outreach and events with ERCF to enhance the region as the Place for Life and build on the strength of this partnership while raising \$1 million dollars for conservation initiatives.
- **Regional Collaboration [15.3].** ERCA will continue to work with Tourism and Economic Development partners demonstrating that Essex Region is a sustainable, vibrant place to attract visitors to and investment in our region.

CORPORATE SERVICES

- **Customer Service [14.1].** New capacity related to applicant/customer service, front desk/reception and related internal support functions (e.g. records management, program support, etc.)
- **File management [13.2].** Refine records classification and retention plans to support MFIPPA and other obligations; and begin implementation of new records management system.
- **Operational Policies [13.3].** Review and update all operational and administrative policies to ensure consistency with legislation; public-sector best practice; and Authority practices.
- **Corporate Culture [14.3].** Develop an Employee Handbook to summarize HR related policies, improve new employee onboarding and address issues identified in the 2018 Employee Survey.
- **Data Management [15.2].** Review feasibility of open data sharing in context of the new website; and develop applications to streamline business processes.
- **Sustainability Plan [13.1].** Develop new 5-Year Plan to support initiatives identified in the Strategic Plan and ensure that ERCA has the appropriate resources, and is managed in the most effective and efficient way to support watershed outcomes.





Essex Region Conservation
the place for life

2019 Draft Budget

FUNDING CONSERVATION

ERCA's 2019 Budget is \$7,708,571, which includes a total levy contribution of \$3,238,667. This is an increase of \$89,915 or 32 cents per person (from \$9.68 to \$10.00/person). The budget includes almost \$2.3 million in leveraged funding and when combined with fee for service revenues, almost 60% of ERCA's budget is funded through non-levy sources of funding.

While this builds a strong case for support, it is only enough to maintain the 'status quo'. It is not enough to improve the health of our watersheds, keep beaches open more, reduce phosphorous and blue-green algae in our lakes, provide open spaces and trails that are accessible for people to use, connect and restore forests, wetlands and habitats. These are essential for sustainable communities to build resilience to climate change, and importantly, attracting and retaining the talent this region desires. Further, as funding programs change and evolve with changes in government priorities, or are reduced or eliminated, and as new interests seek funding, it is harder to continue to support key programs with external support - programs that are funded by levy in other conservation authorities.

Sustaining the Place for Life is not our work alone. It is what we do together with municipalities, our neighbours, our universities and colleges, our donors, our local and regional agencies, and the many other partners we work with. We need to celebrate our successes, but we also need to increase the scope, scale and intensity of our joint efforts to create a place we can be proud of and celebrate – one we can call home. For life.

WHERE DOES YOUR \$10 GO?



ERCA's annual revenues for programs and services are in the top 10 of all 36 Conservation Authorities. At the same time, ERCA's operational levy funds approximately one-third of its operations, placing ERCA in the bottom five of all Conservation Authorities, and well below the provincial average (42%). While the average CA levy supporting operations was \$16.42/capita, ERCA's levy supporting operations in 2018 was only \$9.68/capita, which included funds for land acquisition and capital and operational reserves.

ERCA's complete 2019 Draft Budget is available for review online: www.essexregionconservation.ca.



facebook.com/EsssexRegionConservation



[@EssexRegionConservation](https://www.instagram.com/EsssexRegionConservation)



[@EssexRegionCA](https://twitter.com/EsssexRegionCA)



youtube.com/TheEssexRegionCA

Contact Us

Essex Region Conservation Authority

360 Fairview Avenue West, Suite 311
Essex, Ontario N8M 1Y6

P: 519-776-5209

F: 519-776-8688

W: essexregionconservation.ca



Essex Region Conservation
the *place* for life



Essex Region
Conservation Authority
sustaining the place for life



2018 Annual Report

Message from the Chair



There’s no question that the Windsor-Essex-Pelee Island region has felt the devastating impacts of high lake levels and a changing climate, perhaps more profoundly than any other in Ontario.

The storms of September 2016 and August 2017 resulted in more than \$300 million dollars in insured losses in Windsor, Tecumseh and Lakeshore. The August 2017 flooding in the Windsor area was the most catastrophic insurance loss of that year.

This year, ERCA issued 45 flood messages—a 25% increase over 2017.

Violent storms in the spring battered the Lake Erie and Lake St. Clair shorelines, rendering eight homes uninhabitable in the Municipality of Leamington.

Waves combined with high lake levels along the shores of Pelee Island overtopped roads. The west shoreline of Pelee Island has been devastated with damages exceeding \$10 million. We’re seeing invasive species that are threatening the health of our ecosystems—species that even a decade ago we could not have imagined. And the number of days rated ‘very hot’ continues to increase, putting the health of some of our region’s most vulnerable people at risk.

In late 2017, the ERCA Board of Directors unanimously agreed that a regional approach to developing a Climate Change Strategy would be the most efficient and effective path forward to managing the impacts of climate change, and in 2018, progress was made in this regard. It is critically important to bring together

the work that municipalities have been doing independently towards climate adaptation and mitigation, and to connect that work in a regional context.

On behalf of the Board of Directors, I’d like to extend my heartfelt appreciation to all of the partners and volunteers who have come together this year in order to help create a more resilient and sustainable future for our region.

It is only by moving forward together that we can improve our resiliency to climate change and ensure our region is the Place for Life.

Yours in Conservation,


Rick Fryer

Message from the General Manager



While there were many achievements to celebrate in 2018, there were also some significant challenges to overcome. The impacts of a changing climate continue to be of growing concern.

ERCA’s 2016–2025 Strategic Plan lists Climate Change as one of our primary focuses, and we’ve continued to work with municipalities and other agencies to undertake technical studies that support that strategic direction.

Environmental damage, together with climate change, is driving the water-related crises we see in our region and, in fact, around the world. Floods, droughts and pollution are all made worse by degraded vegetation, soil, rivers and lakes. Our Watershed Report Card confirmed that locally, we have some seriously degraded surface water quality, and despite

significant improvements, our natural area coverage remains amongst the lowest in Ontario.

These issues, and their solutions, are interconnected. We need to move forward together to efficiently share research and data, while identifying gaps to advance resiliency and improve environmental sustainability. Nature-based solutions and green infrastructure, such as wetlands, have the potential to solve many of our local flooding challenges. Planting new forests, creating habitat and restoring wetlands will also help rebalance the water cycle and improve human health and the health of our watersheds.

Moving forward together is the only way to realize true progress. This year, with all regional municipalities, we completed consistent Stormwater Management

Standards for the Windsor and Essex Region to provide guidance and design criteria related to local stormwater management and infrastructure resilience. We hosted multiple workshops to provide a forum for partners to collaborate on flood preparedness, building urban flood resilience, and climate change priorities.

Land use planning is paramount to ensuring that we are open to growth while protecting our critical natural areas. Collaboration is the key to improving our regional resilience. We must stand firm, together, to ensure what remains of our critically important and biodiverse habitat is protected.

Sincerely,



Richard Wyma

2018 Watershed Highlights

In 2018, we continued to implement the priorities identified in our Strategic Plan. The following highlights are a snapshot of the projects and programs implemented this year to enrich and sustain the Essex Region as the Place for Life.

Climate Change

Impacts of a changing climate are continuing to be experienced in our region. Lake levels are reaching all-time highs, and the threshold for flood alerts is lower than ever. A record number of flood messages were issued this year, and spring storms battered the Lake Erie shoreline. While efforts to slow climate change must continue, we also need to help our partner communities adapt to its impacts. This year, ERCA:

- Added a Climate Change Specialist to work with municipalities to research vulnerabilities and impacts, develop an adaptation and mitigation plan, and identify priorities for implementation and potential funding supports.
- Hosted a regional, cross-sector Climate Change Workshop to begin setting priorities for actions associated with a changing climate in partnership with the Ontario Climate Consortium and University of Windsor.
- Issued a record 45 advisories ranging from water safety conditions statements to flood warnings.
- Hosted a Flood Preparedness Workshop for municipal officials to increase our collective level of preparedness, coordination and communications.
- Worked with Green Communities Canada to host a cross-sectoral workshop to Build Urban Flood Resilience.
- Added a Watershed Engineer to support stormwater reviews, drainage reviews, and related engineering and infrastructure reviews to ultimately best support municipalities from a regional perspective.



“*Climate change is here. It affects us now.*”
—Dr. Dianne Saxe
Environmental Commissioner of Ontario

On December 5th, ERCA brought together municipalities, researchers, and non-profit organizations to take action on climate change. Keynote speaker, Ontario’s Environmental Commissioner Dr. Dianne Saxe, delivered a message of urgency and action.

Ontario is warming faster than global average bringing with it floods, fires, drought, wind, heat, and other unpredictable and severe climatic conditions. It impacts every part of our lives, from being able to protect and insure our houses against flooding to our health. Windsor-Essex-Pelee Island region has been acutely aware of the devastating impacts of a changing climate for over a decade.

What can we do? In Dr. Saxe’s words: “Reduce our carbon footprint. Get ready to adapt. Speak up.” Together, we can tackle the problem and find local solutions.

Great Lakes

The Great Lakes are our most significant natural resource. This year, we released our 2012–2017 Watershed Report Card, which identified failing grades for surface water quality in virtually every watershed. More must be done, together, to protect and improve water quality. This year, ERCA:

- Implemented 30 water quality improvement projects across the region to protect soil health and water resources.
- Initiated a 4-year, \$600,000 program with funding from Environment and Climate Change Canada to work with farmers to plant cover crops and implement other Best Management Practices to reduce phosphorus in Lake Erie.
- Conducted year-round water quality monitoring at surface water, ground water, and benthos monitoring stations across the region to collect data about land and weather-based influences on our rivers and streams.
- Worked with the University of Windsor’s Great Lakes Institute for Environmental Research to resolve issues related to microbial contamination along our beaches and with the provincial and federal governments to monitor and estimate sources of phosphorus entering Lake Erie.
- Partnered with researchers at the University of Waterloo and the University of Guelph to research the effectiveness of phosphorus-reducing Best Management Practices in Wagle Creek.
- Collaborated with the University of Windsor’s Chemistry Department to develop a new off-grid phosphorus filter for installation at the Lebo Creek Research Wetland. This new filter is designed to remove soluble phosphorus from local waterways to reduce harmful algae blooms.
- Showcased Best Management Practices and innovative technologies that will conserve soil, maintain productivity, improve water quality and quantity, and illustrate that farming and the environment can coexist at the Essex County Demonstration Farm, in collaboration with the Essex Soil & Crop Improvement Association, OMAFRA extension personnel, and Agriculture and Agri-Food Canada scientists.
- Protected sources of drinking water by providing Risk Management Services on behalf of our member municipalities. Following a comprehensive review of the Source Protection Plan and Assessment Report, a Work Plan identifying necessary updates was developed under S. 36 of the Clean Water Act to ensure the ongoing protection of our sources of drinking water.



2012–2017 Watershed Report Card

On March 22, International World Water Day, ERCA and Conservation Authorities across the province launched their 5-year Watershed Checkups. Locally, groundwater in the region continues to score excellently, mainly because of protection offered by our hard clay soils. Surface water quality scores are consistently low, ranging from C – F, with mostly D grades. Forest conditions also scored low, with most watersheds ranked as a D or an F. Decreases were due to more stringent measurement standards, rather than loss of forest habitat. Standards of measurement are set across the province, and it was recognized it would be difficult to achieve a higher score on this scale within our highly agriculturally-based landscape. For example, to achieve a ‘C’ rating would require 15.1% forest cover.

Landscapes & Habitats

Our landscapes and habitats are among the most significant in Canada. While we have planted more than 6.3 million trees and achieved 8.5% natural areas coverage, more action is needed to reach our 12% target. This year, ERCA:

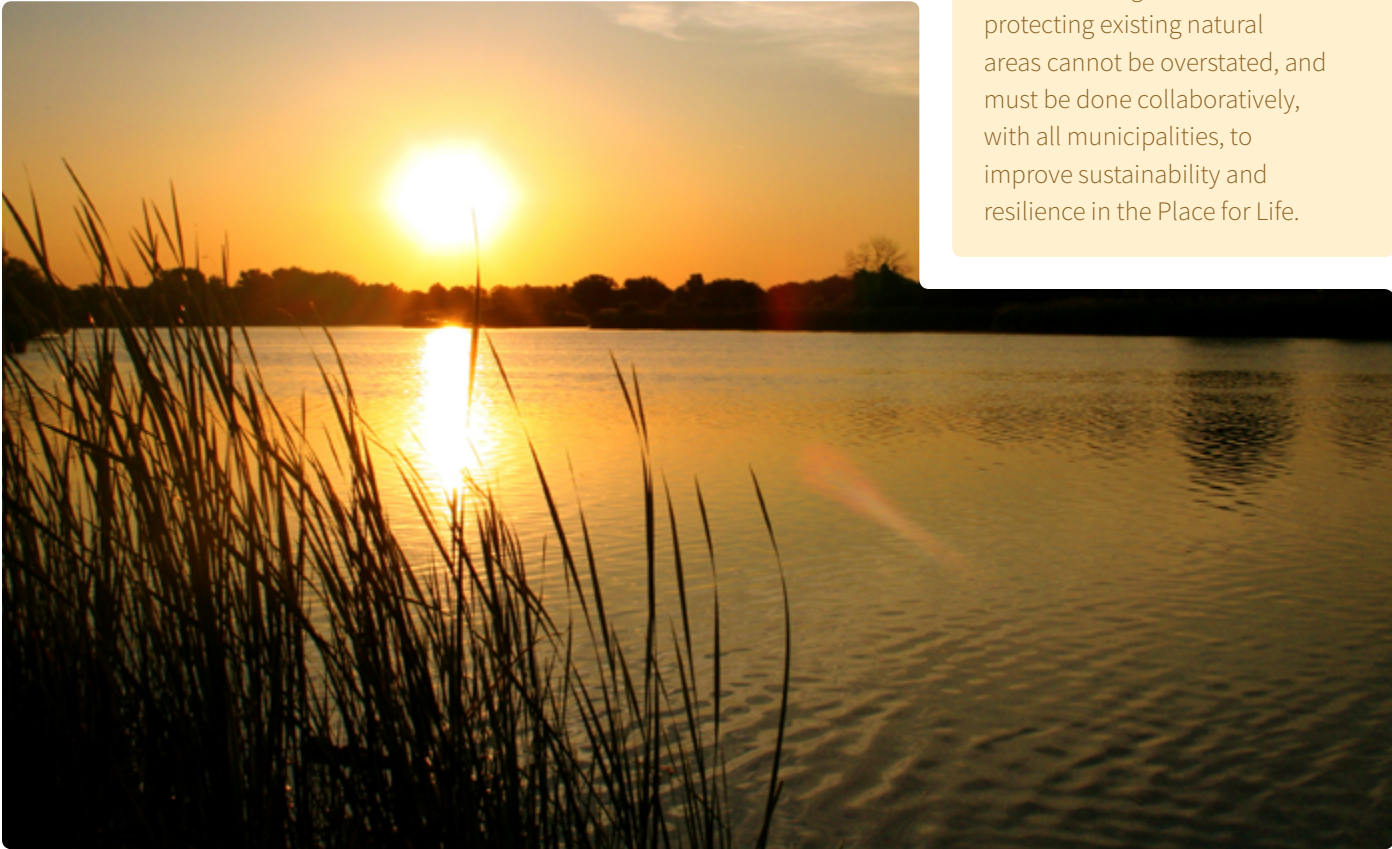
- Planted and distributed 109,000 trees and restored a total 143 acres of habitat to natural area.
- Completed the 10 acre Sturgeon Creek Wetland in partnership with Caldwell First Nation, Environment Canada, Ministry of Natural Resources and the Essex County Field Naturalists.
- Created an additional 20 acres of new wetlands to improve water quality and create new habitat for wildlife.
- Protected 7 acres of natural areas in Kingsville.
- Restored sections of Spring Garden Prairie habitat, owned by the City of Windsor, by removing invasive species such as Autumn Olive and Phragmites. This restoration project will enhance habitat for multiple species-at-risk.
- Completed a Controlled Prairie Burn at Hillman Marsh Conservation Area to improve habitat for nesting birds, reptiles and pollinators.
- Initiated engineering plans to build two major fish and wildlife projects in the Detroit River Area of Concern.

The Importance Of Our Natural Areas

Wetlands provide vital wildlife habitat and resilience to floods and other effects of climate change.

Forests filter pollutants from our air, absorb and filter stormwater and prevent erosion. Our woodlands also provide wildlife habitat for many species, including significant species of conservation concern.

Environment Canada recommends watersheds require 30% forest cover for a functional ecosystem. In our region, natural area coverage currently totals just 8.5%, with a goal to achieve 12%. The importance of planting trees, restoring habitat, and protecting existing natural areas cannot be overstated, and must be done collaboratively, with all municipalities, to improve sustainability and resilience in the Place for Life.



Sustainable Communities

Our urban areas will continue to grow and expand. ERCA will need to continue to work with all partners to collaboratively plan sustainable communities that reduce urban sprawl, are walkable and incorporate green infrastructure. This year, ERCA:

- Completed the Regional Stormwater Management Standards in partnership with all municipalities to provide guidance and design criteria for local stormwater management and infrastructure resilience, and ensure consistent application of requirements.
- Assisted Pelee Island in preparing a shoreline damage assessment that mapped armour stone damage. A photo record was established and specific sections identified for future monitoring. Assisted procuring a consultant to complete drone footage on the west shoreline to assist in a submission for funding for the estimated \$13 million repair work.
- Continued to manage the \$3.2 million improvement project on the Lennon Drain on behalf of City of Windsor.
- Worked with the City of Windsor, Towns of Tecumseh, LaSalle, Lakeshore and the Municipality of Leamington on various drainage and stormwater management technical studies. These collaborations create efficiencies while ensuring natural hazards and natural heritage matters are appropriately considered.
- Provided assistance to Lakeshore, Kingsville, Tecumseh and Leamington on Official Plans updates to ensure the delegated responsibility for Natural Hazards is incorporated into municipal planning documents. Continued to advise on Natural Heritage issues for the region.
- Aided a record 1,113 landowners in ensuring homes and new developments were protected from the dangers of flooding and erosion through development reviews and permit applications.
- Engaged nearly 10,000 students in outdoor and conservation education programs, to provide curriculum-based experiences that teach young people about the importance of protecting our environment and preserving our human and natural heritage.
- Resurfaced the trail and improved drainage at Devonwood Conservation Area, thanks to a partnership with Caesars Windsor Cares and the Essex Region Conservation Foundation. The trail is now known as the Caesars Windsor Nature Trail.
- Welcomed more than 75,000 visitors from near and abroad to enjoy our local natural environment in the Place for Life.
- Completed trail upgrades and boardwalk replacements at Maidstone Conservation Area and initiated boardwalk replacement and enhancements at Holiday Beach Conservation Area.
- Replaced the roof of the sawmill building at the John R. Park Homestead Conservation Area to ensure the protection of the artefacts in the building.

What Makes a Sustainable Community?

The Institute for Sustainable Communities identifies a sustainable community as one that addresses multiple human needs, where all people feel welcome and safe, and decision-making is shared. It manages its human, natural, and financial capital to meet current needs while ensuring adequate resources are available for future generations. Sustainability also requires the ability to quickly adapt to change.

Strong, collaborative, regional planning is critically important to building a sustainable community that addresses environmental, economic and social challenges, builds a better future for all, and ensures that Windsor-Essex-Pelee Island can remain the Place for Life.



A Strong, Resilient Organization

ERCA is a sustainable, resilient and valued agency. Since 1973, ERCA has been striving to achieve a state of sustainability for the Essex Region. In 2018, we worked toward organizational sustainability in the following ways:

- Launched our new website at essexregionconservation.ca to improve customer service, accessibility and engagement.
- Adopted new Administrative Procedure By-Laws to improve clarity and consistency across Ontario’s Conservation Authorities as a requirement of the 2017 amendments to the Conservation Authorities Act.
- Reviewed and simplified ERCA Advisory Board structures and Terms of Reference.
- Initiated web-based permit application process to streamline the service for applicants.
- Continued to support the Essex Region Conservation Foundation in achieving the \$1 million fundraising goal of the Place for Life Campaign. In 2018, the campaign topped \$800,000 in pledges, just halfway through the three-year campaign.
- Added Human Resources capacity and support to ensure increasing government compliance and reporting obligations are achieved.
- Advocated for the Essex Region on 56 local, regional, provincial, national and international boards and committees to ensure the unique needs of our region are represented.



Casey Balvert

2018 ERCA Accountability

The following provides a three-year ‘by-the-numbers’ comparison of achievements. This report follows the priorities identified in our Strategic Plan, and these actions help ensure Windsor-Essex County-Pelee Island are the Place for Life.

Climate Change

		2016	2017	2018
Permits Requested		983	1,042	1,113
Permits Issued		808	1,005	992
Clearances Issued		97	135	179
Request for Information Letters Issued		273	392	273
Permits to Take Water Applications		4	5	3
Appeals		15	10	18
Appeals in CA Favour		15	10	18
Violations Issued		19	34	25
Average Response Time for Permits (days)	Minor Development	10	9.13	9
	Major Development	21	34	12
	Alteration to Waterways	9	8.2	12
Number of Structures Located in Floodplain		10,000	10,000	10,000
Kilometres of Watercourses with Floodplain Mapping Completed		609	609	609
Hectares (area) digitally mapped delineating the CA Regulation Limit		38,304	38,304	38,304
Hectares (area) digitally mapped delineating the flooding hazard limit (flood plains)		38,304	38,304	38,304
Metres of shoreline protected from flooding and erosion		245	250	0
\$ Value of Water/Infrastructure Contributions to Municipalities		287,500	120,000	10,000
Flood Messages	Watershed Conditions	2	13	17
	Flood Watches	7	11	20
	Flood Warnings	3	4	8
	Wind Warnings	0	1	0

Landscapes & Habitats

	2016	2017	2018
Total Landholdings (Hectares)	1,669.6	1,735	1,742
Hectares of recreational land owned and managed	1,036.8	1,056.8	1056.8
Total hectares under forest management plans	44.39	44.39	44.39
Total Taxes for CA Landholdings	\$75,290	\$66,661	\$70,227
Land Acquisition in Reporting Year (in acres)	0	160	7
Value of acquisitions (Fair Market Value)	0	\$1,562,250	\$426,000
Total Acres of Habitat Restored	103.5	92.5	143
Number and Acres of Trees	101,000 trees 87 acres	92,500 trees 70 acres	109,105 trees 96 acres
Number and Acres of Wetlands	5 wetlands 5 acres	6 wetlands 15 acres	6 wetlands 31 acres
Number and Acres of Prairie	8 sites 11.5 acres	5 sites 7.5 acres	5 sites 16 acres
Number of landowners involved in restoration	214	222	191
Trees planted by volunteers	2,603	2,973	3,259
Native plants planted by volunteers	3,858	1,610	1,600

Great Lakes

		2016	2017	2018
Water Quality Improvement Projects Implemented	Agriculture/Other (total)	88	28	30
	Detroit River Watersheds	10	10	3
	Lake Erie Watersheds	19	13	21
	Lake St. Clair Watersheds	12	5	2
	Great Lakes Agricultural Priority Subwatershed Stewardship Initiative	47	23	0*
Number of wells decommissioned		9	5	4
Number of landowners participating		58	23	20
Number of surface water quality monitoring stations		77	58	61
Number of ground water quality monitoring stations		8	8	8
Number of benthos monitoring stations		8	20	15

*Program ended in 2018.

Sustainable Communities

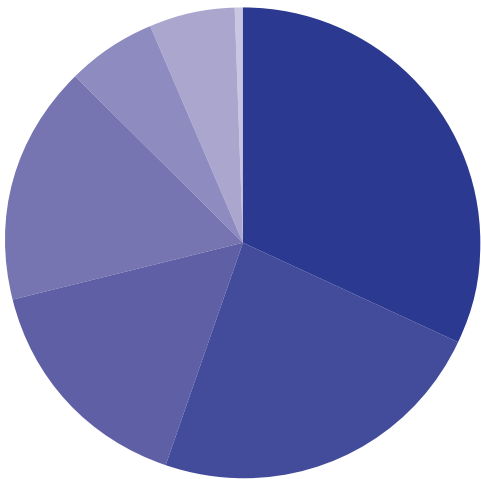
	2016	2017	2018
Planning Services—transactions/year	689	822	850
Kilometres of Trails owned, managed & developed	95.1	98	98
Number of volunteers	1,904	2,064	2,185
Number of outreach events	35	19	30
Number of schoolyard naturalization projects	3	2	2
ERCA hosted special events	36	29	24
Number of schools	96	71	72
Number of unique education programs	294	434	256
Number of students	9,986	12,224	9,958
Number of public meetings/workshops	19	31	22
Day Use Visitors to JRPH (estimated)	11,190	11,830	11,910
Day Use Visitors to HBCA (estimated)	9,000	12,588	9,600
Number of seasonal campsites purchased	69	67	72

A Strong, Resilient Organization

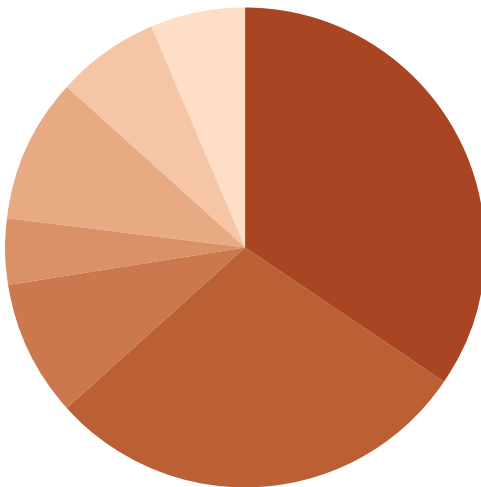
	2016	2017	2018
Area of CA Jurisdiction	1,681.3 km²	1,681.3 km²	1,681.3 km²
Watershed Population	326,105	325,351	323,793
Staff—Permanent and Long-Term Contract	36	36	39
Staff—Special Grant and Short-Term Full-Time Equivalent Contract	8	10	12
Average Full Time Staff Length of Service	10	12	9
Number of Local Committees, Boards and Advisory Panels with ERCA representation	27	29	28
Number of Provincial Committees, Boards and Advisory Panels with ERCA representation	26	28	28
Number of research studies with ERCA involvement	8	8	12
Number of unique visitors to our website	68,591	70,997	65,528*
Number of Facebook followers	2,424	2,948	3,168
Number of Twitter followers	2,428	2,676	2,896
Number of Instagram followers (launched October 2016)	90	225	1,061
Number of Youtube video views	2,134 views 4,334 min	2,550 views 4,893 min	2,400 views 4,500 min

*Some data unavailable due to website changeover.

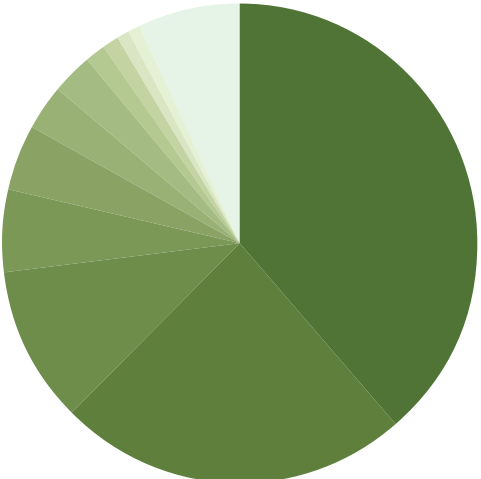
2018 Financial Review



2018 Projected Funding Sources		\$9,799,793
Total Levy		\$3,148,752
Municipal Special Project Contributions		\$2,291,244
Fee for Service		\$1,540,159
Federal Grants		\$1,613,142
Donations (ERCF and others)		\$591,425
Provincial Grants		\$584,049
Prior Years' Surplus		\$31,021



2018 Projected Uses of Funds by Function		\$9,799,793
Watershed Management Services		\$3,386,592
Conservation Services		\$2,844,702
Science & Research		\$876,669
Outreach & Education		\$448,332
Corporate/Admin Shared Services		\$959,636
Transfers to Reserves/Future Years		\$667,120
Asset Replacement/Capital Projects		\$616,741



2018 Projected Uses of Funds by Expense Type		\$9,799,793
Wages & Benefits		\$3,796,727
Subcontracted Construction/Technical Mun Spec Projects		\$2,343,763
Subcontracted Construction/Technical ERCA Capital Projects		\$1,038,727
Plant Materials/Subsidies		\$545,020
Project/Operating Supplies		\$435,010
Travel & Fleet Operations & Replacement		\$299,482
Rent/Taxes/Utilities/Security		\$255,200
Maintenance/Repairs		\$138,930
Insurance, Audit & Legal		\$109,175
IT/Software/Data Services		\$98,148
CO Dues & Board of Directors		\$72,490
Transfers to Reserves/Future Years		\$667,120

2018 At a Glance



109,105

Trees planted to increase green space.



30

Projects implemented to improve **water quality**.



9,958

Students educated through outdoor education programs.



1,113

Permits requested and reviewed to ensure landowner protection.



2,064

Awesome **volunteers** helped enrich & sustain the Place for Life.



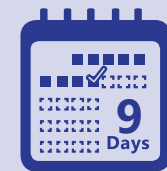
84

Surface, ground and benthos water quality sites **monitored**.



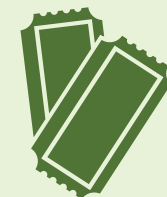
45

Flood messages issued—a record in this changing climate.



9 days

Average **permit response time** for minor developments.




78

Events and **workshops** hosted to connect people with the Place for Life.



143

Acres of forest, tall grass prairie, and wetlands restored.

Front cover image:
 Mel Diotte



facebook.com/**EssexRegionConservation**



@**EssexRegionConservation**



@**EssexRegionCA**



youtube.com/**TheEssexRegionCA**

Contact Us

360 Fairview Avenue West, Suite 311
Essex, Ontario, N8M 1Y6

P: 519-776-5209

F: 519-776-8688

W: essexregionconservation.ca